



Fastmarkets Dashboard

User Guide

Charts

V2.1.8526

20<sup>th</sup> Jan 2022

# Table of Contents

INTRODUCTION.....	3
PRICE CHART WIDGET.....	3
• Add the Price Chart widget and create a chart.....	3
• Edit the date range of the chart.....	4
• Edit displayed price fields .....	6
CHART AVERAGE PRICES .....	6
CHART DISPLAY OPTIONS.....	7
• Hide prices in the Price Chart widget .....	7
• Amend line chart colours .....	7
COMPARE MULTIPLE PRICES IN A CHART – Y AXIS OPTIONS .....	8
VIEW HISTORICAL PRICES IN A DATA TABLE FROM THE PRICE CHART WIDGET .....	9
LIVE CHART WIDGET .....	11
• Search and add a symbol to the Live Chart widget.....	12
• Edit the periodicity displayed in the chart.....	12
SELECT CHART TYPES .....	12
EDIT THE LIVE CHART WIDGET .....	14
FURTHER HELP .....	15

## INTRODUCTION

The Dashboard provides two different types of charting tools. The first is the **Price Chart widget** enabling you to identify trends, compare prices over time or gain a view of where to forecast prices graphically for prices with a high/low/mid value or bid/ask/mid. View historical pricing as a line chart for up to eight prices for a chosen date range; compare price fields; view absolute prices; or compare prices with a percent change chart.

The second is the **Live Chart widget** which enables you to view historical and intra-day data for a single exchange or over the counter (OTC) price (such as spot precious metals or foreign exchange (FX) rates) plotting open/high/low/close prices. Select either a line, bar, candle or mountain chart for one price, displaying the data in intervals from 5 minutes up to 1 month with volume data (where available) in the sub-chart at the bottom.

## PRICE CHART WIDGET

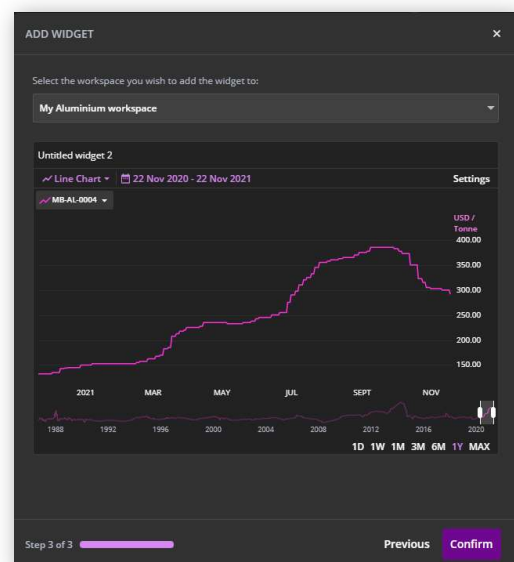
### Add the Price Chart widget and create a chart

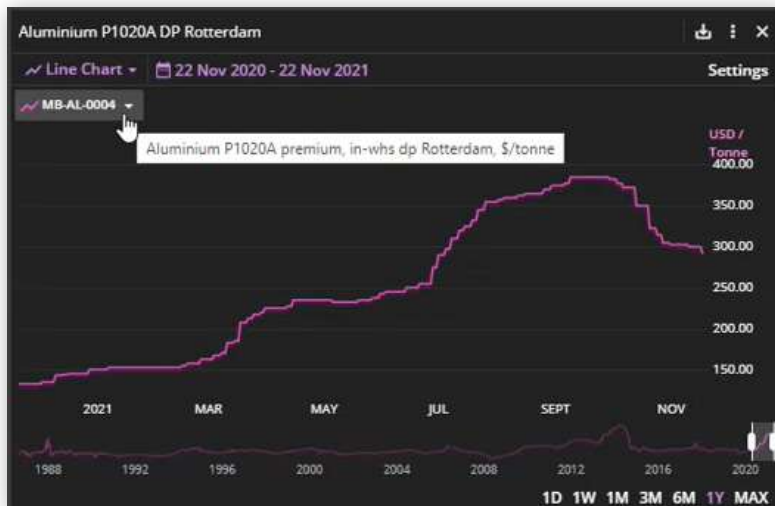
To create a chart, click Add Widget, then click the Price Chart widget.

Search for and select the prices you wish to chart. You will do this in the same way you chose a price for the Price Tile widget, but this time, you can make up to eight selections. Then click Next.

From the dropdown menu, choose the workspace to which you want to attach the Price Chart widget. Click Confirm.

By default, the chart will plot the mid price (if available) and display the last year of data.



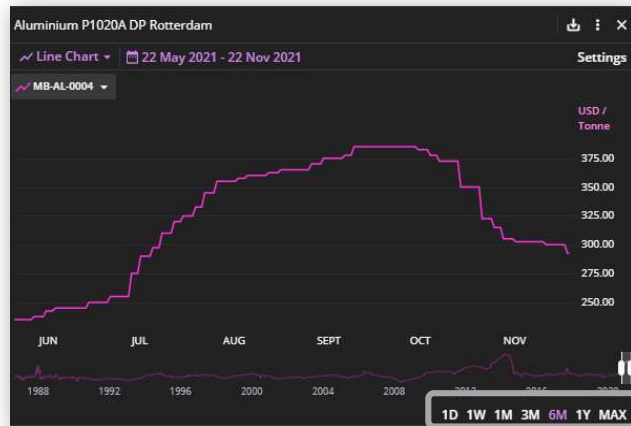


The price symbol (also known as the price ID) is displayed in the legend above the chart. To view the full description, hover the mouse over each symbol in the legend. In this example, the cursor is hovering over MB-AL-0004.

### Edit the date range of the chart

By default, one year of historical pricing is displayed, but the date range can be customized in three ways:

1. Select from the pre-configured time-periods below the chart, as shown at right.



2. Customize the time period by using the calendar. To select the start date:

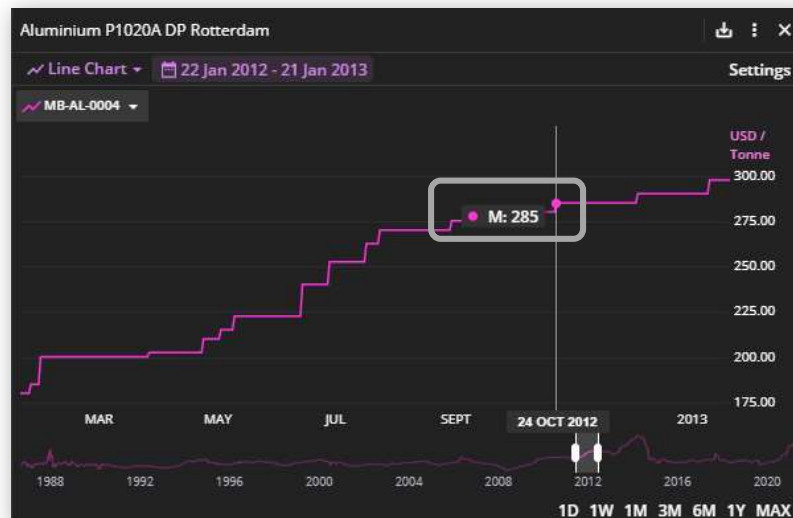
- a. Click into the dates in purple to open the calendar, then use the double arrows to move back in yearly increments or the single arrow to move back in monthly increments. When you have reached the selected month/year click on the start date
- b. Repeat step a) to select your end date/month/year



3. Select a time period using the range slider in the sub-chart. To view a new time period, choose the period from the dropdown menu, for instance “One Year.” Using the slider, move the start and end dates. In this instance, we have selected “One Year” as a time bracket, then moved the slider to show data only for the dates 22 Jan 2012-21 Jan 2013.

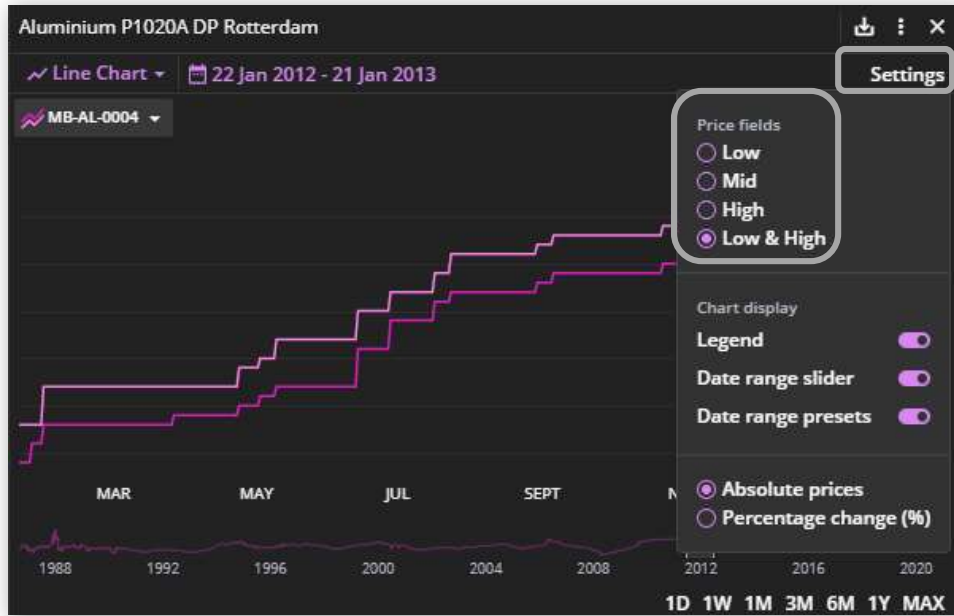


4. View prices for a specific date by hovering your cursor over the lines in the chart. A heads-up display showing the date and prices will appear with a vertical line as the cursor moves over the price lines.



**Edit displayed price fields**

It is possible to display the midpoint, high, low or both high and low of a price range via the Settings panel.

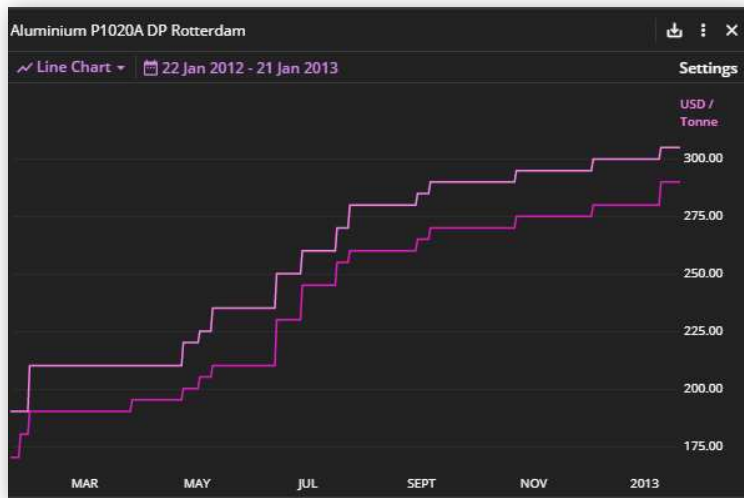


**CHART AVERAGE PRICES**

To chart averages for physical prices, click on the drop down against the name in the legend and choose an option.



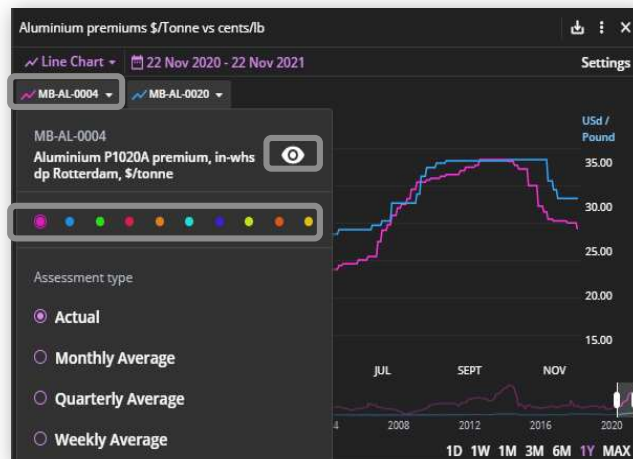
## CHART DISPLAY OPTIONS



Maximize screen space by toggling the "Legend" or "Date range slider" or "Date range presets" on or off in the Settings panel. This is how the chart looks with all removed

### Hide prices in the Price Chart widget

Prices in the chart can be hidden at any time. To hide a price from the chart display, click the price ID in the legend, then click the eye icon, as shown at right. The price ID will remain in the legend but appear grayed out. To add it back into the chart, click the eye icon again.



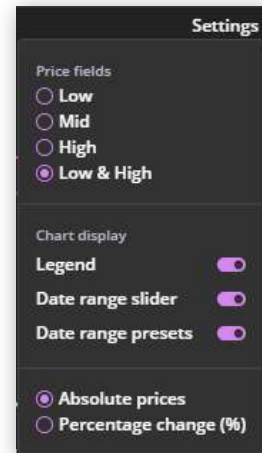
### Amend line chart colors

To amend default colors used in the chart when prices are plotted, click on the symbol in the legend and select from the color palette.

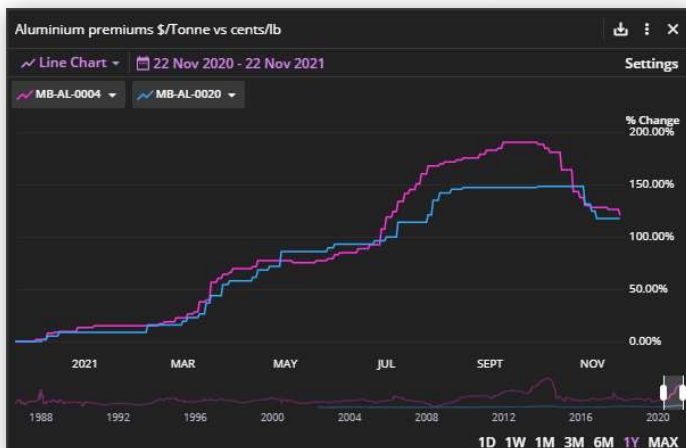
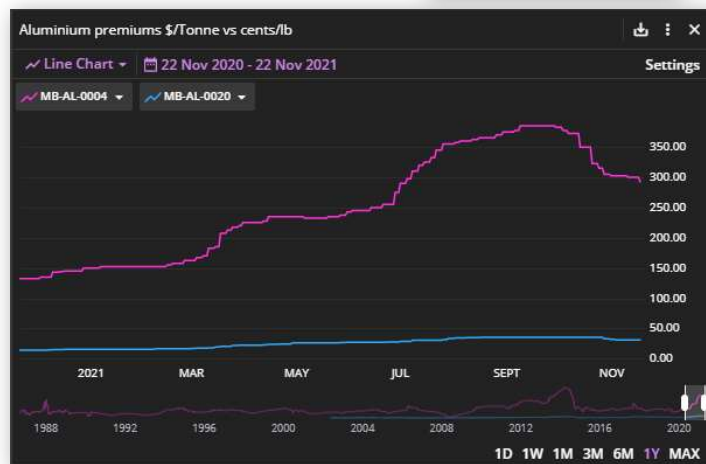
## COMPARE MULTIPLE PRICES IN A CHART – Y AXIS OPTIONS

By default, the chart will plot absolute prices on the Y axis scale. However, some prices you choose to compare in your chart may have a widely differing price range, currency and/or unit of measure – and, therefore, scale.

The Settings menu enables you to choose among three options for graphical displays. The following screenshots, using the same three cobalt prices, display these charting options:



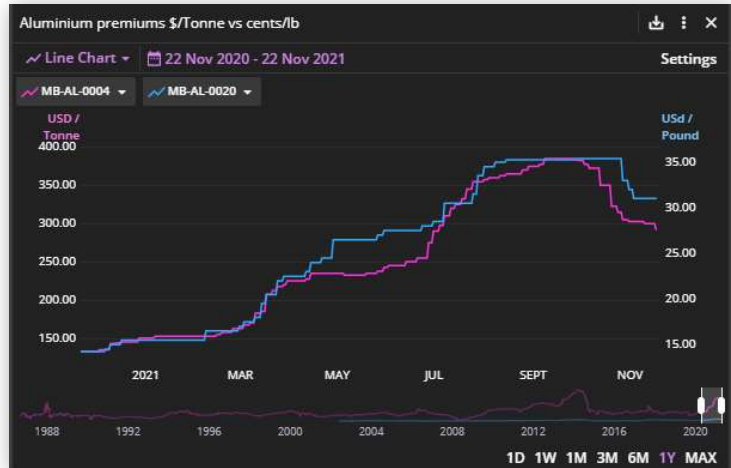
**a. Absolute prices** – this is the default option and displays prices as their actuals.



**b. Percentage change** – this enables you to display a comparison of percentage-change movements from a particular starting point to the most recent assessment.

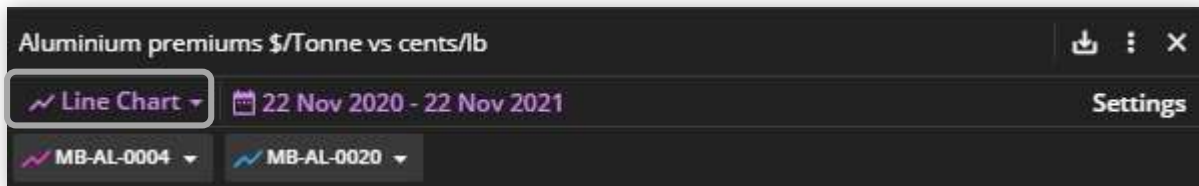


c. **Multiple axes** – this functionality will plot each price on an individual Y axis, enabling you to overlay and visualize prices independent of differences in range, currency and/or unit of measure.



## VIEW HISTORICAL PRICES IN A DATA TABLE FROM THE PRICE CHART WIDGET

You can view historical prices in a data table without navigating to a different widget or workspace. Click on the Line Chart link above the legend to change the view to Data Table.



Assessed prices are displayed in bold white. Prices in gray are the assessed prices repeated across each working date to provide a price where assessment dates may differ. In the example at left, prices are assessed weekly on different days of the week.

Aluminium premiums \$/Tonne vs cents/lb

Data Table | 22 Nov 2020 - 22 Nov 2021

View data as: Line Chart, Data Table (checked)

	MB-AL-0004	MB-AL-0020
	Mid	Mid
19 Nov 2021	292.50	31.00
18 Nov 2021	300.00	31.00
17 Nov 2021	300.00	31.00
16 Nov 2021	300.00	31.00
15 Nov 2021	300.00	31.00
12 Nov 2021	300.00	31.00
11 Nov 2021	302.50	31.00
10 Nov 2021	302.50	31.00

Use the Settings panel to amend the price fields to display the Low, Mid or High. You can amend the date range using the preset time periods or the calendar above the table.

You may wish to change how historical prices display in the Historic Price Table widget depending on how frequently the prices are assessed and whether you require to view a price for each day or not.

Settings

Price fields

Low

Mid

High

Low & High

Fill settings

Values Only  
Returns only assessed or published prices

Carry Forward  
Repeats the last available price for all weekdays until the price is updated again

Null  
Show all weekdays including holidays even if there is no updated price for a given date

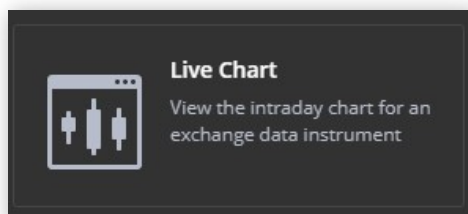
The Fill settings will enable you to select from the following display options:

- **ValuesOnly:** The dates and prices returned will only display when assessed or published prices are available
- **CarryForward:** If there is no published price for a given day, the function will “carry forward” – or repeat – the last available price for ALL WEEKDAYS until the price is updated again. NOTE: public holidays will not be excluded. Example: the price is assessed weekly (on Monday). For Tuesday, Wednesday, Thursday or Friday the function will return Monday’s price.

- **Null:** ALL WEEKDAYS INCLUDING HOLIDAYS will be displayed in the Date column. If there is no published price for a given date, the corresponding price in that row will be blank.

To return to the chart display, click Data Table in the top-left corner of the widget, then click Line Chart. To view more than eight historical prices in a data table, use the Historic Price Table widget (learn more about this in the Historic Price Table widget section).

## LIVE CHART WIDGET



Visualizing trends and intra-day price movements is critical to monitoring and analyzing your markets. The Live Chart widget enables you to view historical and intra-day data for a single exchange or Over The Counter (OTC) price (such as spot precious metals or foreign exchange (FX) rates) with open/high/low/close prices.

Chart either a line, bar, candle or mountain chart for one price, displaying the data in intervals from 5 minutes up to 1 month with volume data (where available) in the sub-chart at the bottom.

This example uses Foreign Exchange rates, for further information on working with exchange data in the Live Chart widget please refer to the Exchange prices section below.

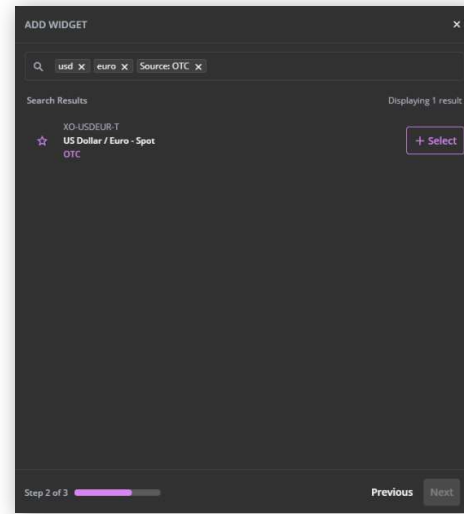


### Search and add a symbol to the Live Chart widget

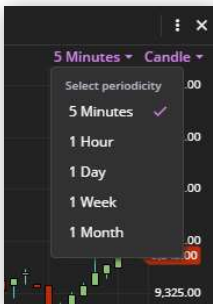
To add a Live Chart widget click Add widget > Live Chart and search for the price you wish to plot in the chart. To search for the Euro US Dollar spot exchange rate symbol, type OTC and choose Source: OTC. This will start to filter the symbols.

Type Euro and hit return then type usd and hit return and click + Select for the US Dollar/Euro – Spot rate.

You can only add one symbol at a time into the Live Chart widget.



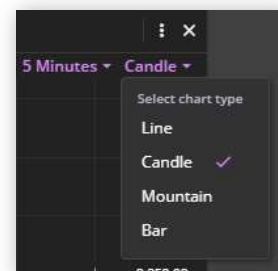
### Edit the periodicity displayed in the chart



To change the periodicity of the chart, click the dropdown top right. Each candle represents 5 minutes of data. In this case we can click on the 5 minutes dropdown and change to any of these other periods.

### **SELECT CHART TYPES**

To change the type of chart which is displayed, click the bar type at top right. The options are bar, candle, line and mountain.



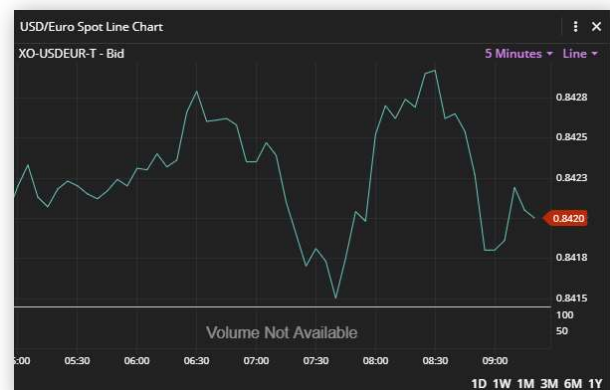
**Candle chart** – here each candle represents the open, high, low and close of the period. The high is represented by the vertical line, which extends above the top of the body to show the highest price. The low is represented by the lowest point on the vertical line.

The body of the candle represents the open and close. If the body is filled in green, then the price has risen that day so the open would be the lowest line of the box and the close would be top line. Red represents the price having a net decline so the top line is the open and the bottom line would be the close.



**Bar chart** -this is a similar display to candle charts but does not have a body filled in. The bar represents the period selected and the vertical line represents the high and low of that price. The left-hand horizontal line represents to opening price and the right hand represents the closing price.

**Line chart** - represents the price history for the period selected.





**Mountain chart** - displays the same as a line chart but shaded to the bottom of the X axis for visual effect.

## EDIT THE LIVE CHART WIDGET

### View price data for each interval

When hovering over a price, the chart shows a display box with details of the price at that interval.

The marker will update according to the delay class that the user subscribes to i.e., a delayed or live real-time price.



### Resize the chart

Change the size of the chart by moving the mouse scroller up to see more data, and down to zoom in on less data.

Click and drag the mouse to move forwards and backwards in time.

## FURTHER HELP

If after reading these instructions you have further questions about how to use the Fastmarkets Dashboard, please contact our Customer Success team or for access/order queries our Client Services team:

- **Europe, Middle East and Africa: +44 20 3855 5581**
- **Asia: +65 31 633 458**
- **Americas: +1 708 329 2641**
- **Customer Success Email: [customersuccess@fastmarkets.com](mailto:customersuccess@fastmarkets.com)**
- **Client Services Email: [client.services@fastmarkets.com](mailto:client.services@fastmarkets.com)**