



Fastmarkets Dashboard
User Guide

Exchange Market Data

V2.1.8526

4th October 2022

Table of Contents

INTRODUCTION.....	3
EXCHANGE PRICES IN PRE-CONFIGURED WIDGETS.....	4
• LME Official Prices and LME Unofficial Prices widgets.....	4
• CME Settlement Prices widget and SHFE Close Prices Widget.....	5
• Data reports widget.....	5
EXCHANGE PRICES IN THE MULTI PRICE TABLE WIDGET.....	10
EXCHANGE PRICES IN THE HISTORIC DATA TABLE WIDGET.....	12
EXCHANGE PRICES IN THE PRICE CHART WIDGET.....	13
EXCHANGE PRICES IN THE LIVE CHART WIDGET.....	14
EXCHANGE ADDITIONAL DATA & FUNCTIONALITY.....	18
FURTHER HELP.....	22

INTRODUCTION

The Fastmarkets Dashboard provides the ability to view exchange and physical prices. Depending on your access it is possible to display previous day or delayed prices from the London Metal Exchange (LME), Chicago Mercantile Exchange (CME) and Shanghai Futures Exchange (SHFE). Based on the licensing terms and conditions for each exchange the below table provides an overview of the delay classes and exchange fees for this pricing:

Delay class	London Metal Exchange (LME)	Chicago Mercantile Exchange (CME)	Shanghai Futures Exchange (SHFE)
Live	Coming soon	Coming soon	Coming soon
Delayed	Coming soon	10 mins (free)	30 mins (free)
Previous Day	After midnight GMT	Not available	Not available

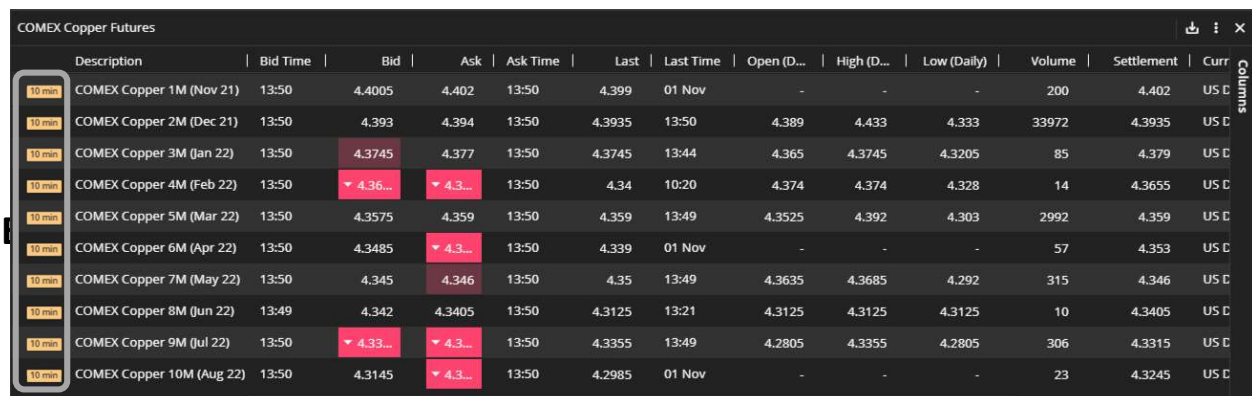
Please note all exchange pricing is displayed in Coordinated Universal Time (UTC).

The Multi Price Table displays a delay class icon in the first left column denoting which access you are subscribed to. In the example below the delay class is P/D which stands for Previous Day.



	Description	Symbol	Date	Bid	Ask
P/D	LME Aluminium Cash Official	XL-AH-FRC.O	16 Aug 2021	2,644.00	2,644.00
P/D	LME Copper Cash Official	XL-CA-FRC.O	16 Aug 2021	9,377.00	9,377.00
P/D	LME Nickel Cash Official	XL-NI-FRC.O	16 Aug 2021	19,505.00	19,505.00
P/D	LME Lead Cash Official	XL-PB-FRC.O	16 Aug 2021	2,419.50	2,419.50
P/D	LME Zinc Cash Official	XL-ZS-FRC.O	16 Aug 2021	3,012.00	3,012.00
P/D	LME Tin Cash Official	XL-SN-FRC.O	16 Aug 2021	36,064.00	36,064.00
P/D	LME NASAAC Cash Official	XL-NA-FRC.O	16 Aug 2021	2,438.00	2,438.00
P/D	LME Aluminium Alloy Cash O	XL-AA-FRC.O	16 Aug 2021	2,250.00	2,250.00
P/D	LME Cobalt Cash Official	XL-CO-FRC.O	16 Aug 2021	52,330.00	52,330.00

In this example, 10 minute COMEX (CME) Copper delayed data is displayed with the delay time according to the exchange licensing terms (this will vary between exchanges, see above table):



	Description	Bid Time	Bid	Ask	Ask Time	Last	Last Time	Open (D...	High (D...	Low (Daily)	Volume	Settlement	Curr
10 min	COMEX Copper 1M (Nov 21)	13:50	4.4005	4.402	13:50	4.399	01 Nov	-	-	-	200	4.402	US C
10 min	COMEX Copper 2M (Dec 21)	13:50	4.393	4.394	13:50	4.3935	13:50	4.389	4.433	4.333	33972	4.3935	US C
10 min	COMEX Copper 3M (Jan 22)	13:50	4.3745	4.377	13:50	4.3745	13:44	4.365	4.3745	4.3205	85	4.379	US C
10 min	COMEX Copper 4M (Feb 22)	13:50	4.36...	4.3...	13:50	4.34	10:20	4.374	4.374	4.328	14	4.3655	US C
10 min	COMEX Copper 5M (Mar 22)	13:50	4.3575	4.359	13:50	4.359	13:49	4.3525	4.392	4.303	2992	4.359	US C
10 min	COMEX Copper 6M (Apr 22)	13:50	4.3485	4.3...	13:50	4.339	01 Nov	-	-	-	57	4.353	US C
10 min	COMEX Copper 7M (May 22)	13:50	4.345	4.346	13:50	4.35	13:49	4.3635	4.3685	4.292	315	4.346	US C
10 min	COMEX Copper 8M (Jun 22)	13:49	4.342	4.3405	13:50	4.3125	13:21	4.3125	4.3125	4.3125	10	4.3405	US C
10 min	COMEX Copper 9M (Jul 22)	13:50	4.33...	4.3...	13:50	4.3355	13:49	4.2805	4.3355	4.2805	306	4.3315	US C
10 min	COMEX Copper 10M (Aug 22)	13:50	4.3145	4.3...	13:50	4.2985	01 Nov	-	-	-	23	4.3245	US C

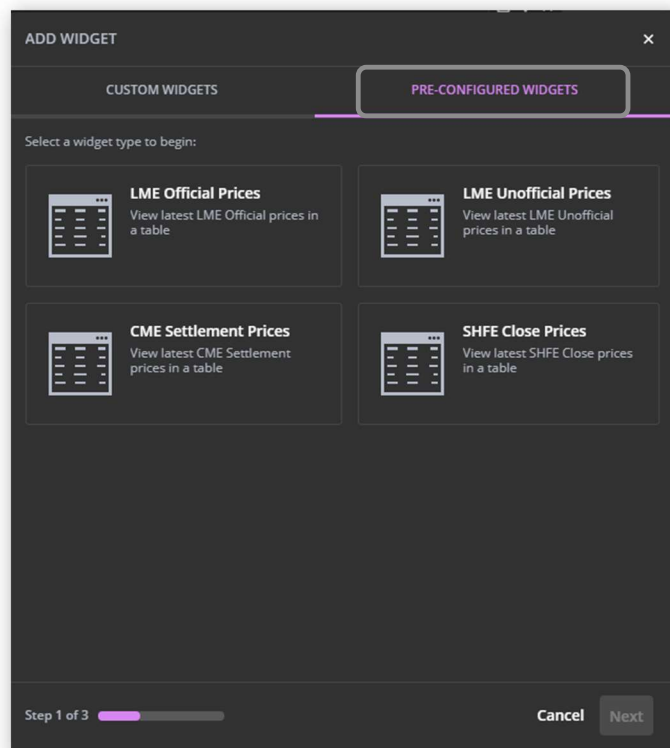
The Dashboard provides the ability to view pricing from the LME, CME Group and SHFE in pre-configured widgets.

- LME Official Prices widget
- LME Unofficial Prices widget
- CME Settlement Prices widget
- SHFE Close Prices widget

Click on the Add Widget icon and select PRE-CONFIGURED WIDGETS.

These pre-configured widgets make finding key reference exchange pricing quick and easy with fixed contracts and fields.

Alternatively you can create your own Multi Price Tables where you can mix and match pricing.



LME Official Prices and LME Unofficial Prices widgets

The LME Official Prices widget and LME Unofficial Prices widget provide an overview of previous day key exchange pricing for cash, three months, 15 months and the first three December prompt dates (where applicable) for the following contracts:

CA – Copper; AH – Aluminium; NI – Nickel; ZS – Zinc; PB – Lead; SN – Tin; AA – Aluminium Alloys; CO – Cobalt; and NA – Nasaac (North American Special Aluminum Alloy Contract)

The LME Official Prices widget (immediately below) and the LME Unofficial Prices widget will appear as they do in the following screenshots. The date field for the report can be found at the top of the widget.

LME Officials (USD/Tonne) — 6 Aug 2021												
Metal	Cash		3 Months		15 Months		Dec 1		Dec 2		Dec	
	Bid	Ask	Bid	Ask	Bid	Ask	Bid	Ask	Bid	Ask	Bid	
CA	9,529.50	9,529.50	9,549.50	9,549.50	-	-	9,546.50	9,546.50	9,500.50	9,500.50	9,420.50	
AH	2,618.50	2,618.50	2,621.50	2,621.50	-	-	2,581.50	2,581.50	2,546.50	2,546.50	2,526.50	
NI	19,533.00	19,533.00	19,550.00	19,550.00	-	-	19,579.00	19,579.00	19,604.00	19,604.00	19,634.00	
ZS	3,006.00	3,006.00	3,010.50	3,010.50	-	-	2,993.00	2,993.00	2,934.00	2,934.00	2,877.50	
PB	2,362.00	2,362.00	2,331.00	2,331.00	-	-	2,273.50	2,273.50	2,243.50	2,243.50	2,223.50	
SN	36,065.00	36,065.00	34,771.00	34,771.00	31,786.00	31,786.00	-	-	-	-	-	
AA	2,228.00	2,228.00	2,224.00	2,224.00	-	-	2,224.00	2,224.00	-	-	-	
CO	52,390.00	52,390.00	52,500.00	52,500.00	54,365.00	54,365.00	-	-	-	-	-	
NA	2,409.00	2,409.00	2,395.00	2,395.00	-	-	2,395.00	2,395.00	-	-	-	

CME Settlement Prices widget and SHFE Close Prices widget


The CME Settlement Prices widget displays settlement prices (and will update depending on your level of access) for the first four CME (formerly Comex) gold, copper and silver futures contracts as well as (former NYMEX) busheling, HRC steel, platinum and palladium.

The SHFE Close Prices widget displays the latest closing prices for the first month SHFE aluminium, copper, nickel, lead, tin and zinc futures contracts.

CME Settlement — 6 Aug 2021				SHFE Closing (CNY/Tonne) — 6 Aug 2021	
Description	Month	Settlement Price	Instrument Base	Description	Close
COMEX Gold 1M (Aug 21)	Aug 21	1,760.00	USD / Troy ounce	SHFE Aluminium 1M (Aug 21)	19,940.00
COMEX Gold 2M (Sep 21)	Sept 21	1,760.30	USD / Troy ounce	SHFE Copper 1M (Aug 21)	70,300.00
COMEX Gold 3M (Oct 21)	Oct 21	1,761.10	USD / Troy ounce	SHFE Nickel 1M (Aug 21)	145,430.00
COMEX Gold 4M (Dec 21)	Dec 21	1,763.10	USD / Troy ounce	SHFE Lead 1M (Aug 21)	15,730.00
COMEX Copper 1M (Aug 21)	Aug 21	4.35	USD / Pound	SHFE Tin 1M (Aug 21)	231,800.00
COMEX Copper 2M (Sep 21)	Sept 21	4.35	USD / Pound	SHFE Zinc 1M (Aug 21)	22,535.00
COMEX Copper 3M (Oct 21)	Oct 21	4.34	USD / Pound		
COMEX Copper 4M (Nov 21)	Nov 21	4.34	USD / Pound		
COMEX Silver 1M (Aug 21)	Aug 21	24.31	USD / Troy ounce		
COMEX Silver 2M (Sep 21)	Sept 21	24.33	USD / Troy ounce		
COMEX Silver 3M (Oct 21)	Oct 21	24.34	USD / Troy ounce		
COMEX Silver 4M (Dec 21)	Dec 21	24.38	USD / Troy ounce		

Data reports widget

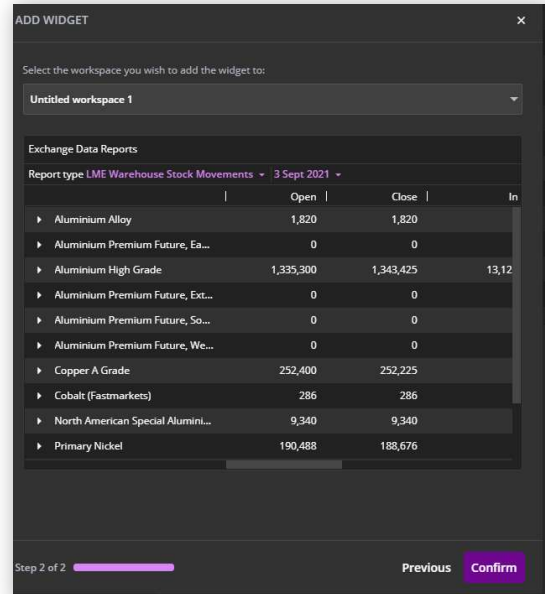
View a selection of pre-configured reports displaying data from the London Metal Exchange (LME) including:



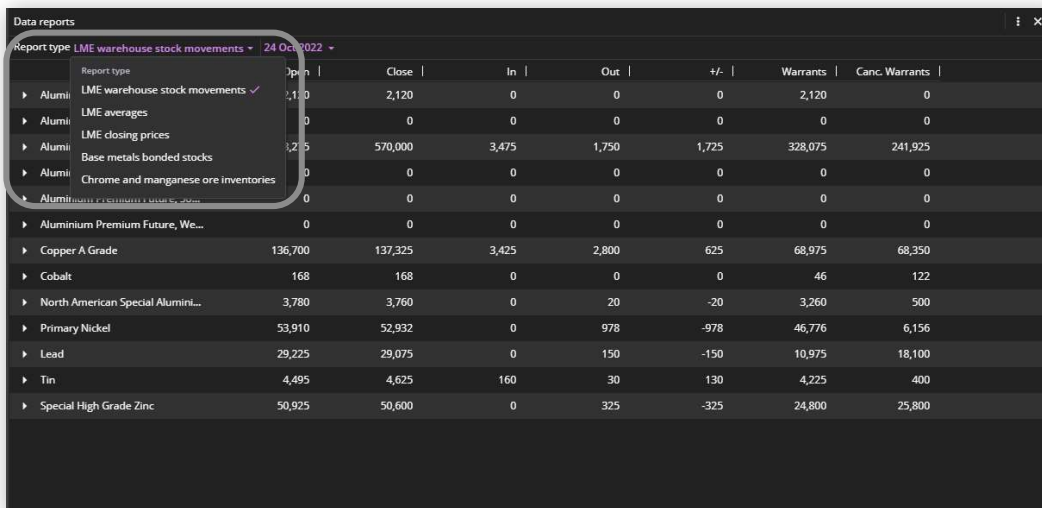
Data reports
Access LME data, bonded stocks and inventories

- LME Warehouse Stocks
- LME Averages (LME Official cash prices)
- LME Closing Prices (Evening Evaluations)

To add a Data reports widget click Add widget > Data reports and search for the report you wish to view. Click Confirm.

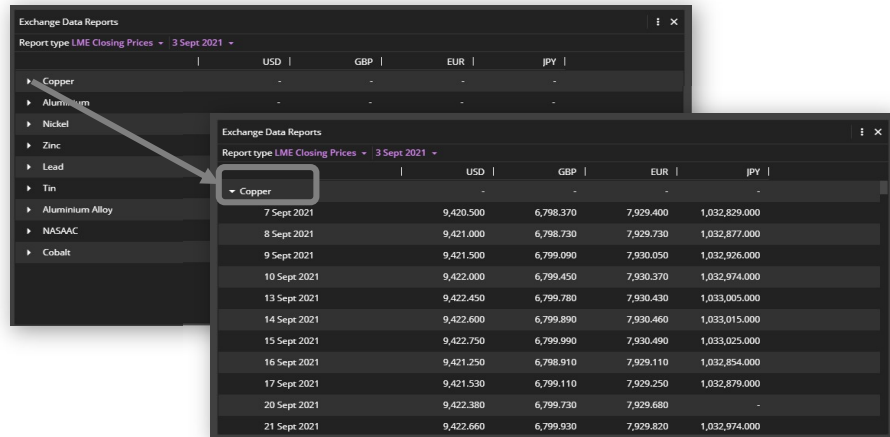


Once the widget is populated, to amend the type of report click on the purple Report type as per below:



LME Closing Price Report

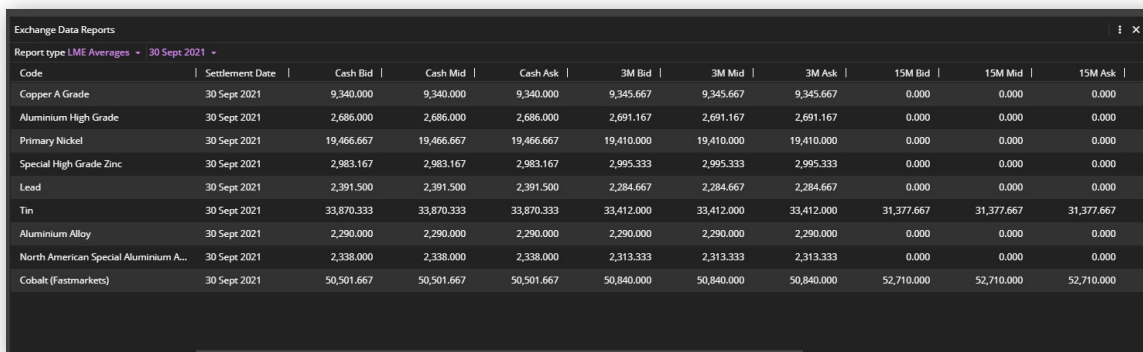
On the LME Closing Prices report, click on the arrow next to each metal to display closing prices for each prompt date in each of the 4 currencies cleared by the LME.



Report type	LME Closing Prices	3 Sept 2021	USD	GBP	EUR	JPY
Copper						
7 Sept 2021			9,420.500	6,798.370	7,929.400	1,032,829.000
8 Sept 2021			9,421.000	6,798.730	7,929.730	1,032,877.000
9 Sept 2021			9,421.500	6,799.090	7,930.050	1,032,926.000
10 Sept 2021			9,422.000	6,799.450	7,930.370	1,032,974.000
13 Sept 2021			9,422.450	6,799.780	7,930.430	1,033,005.000
14 Sept 2021			9,422.600	6,799.890	7,930.460	1,033,015.000
15 Sept 2021			9,422.750	6,799.990	7,930.490	1,033,025.000
16 Sept 2021			9,421.250	6,798.910	7,929.110	1,032,854.000
17 Sept 2021			9,421.530	6,799.110	7,929.250	1,032,879.000
20 Sept 2021			9,422.380	6,799.730	7,929.680	-
21 Sept 2021			9,422.660	6,799.930	7,929.820	1,032,974.000

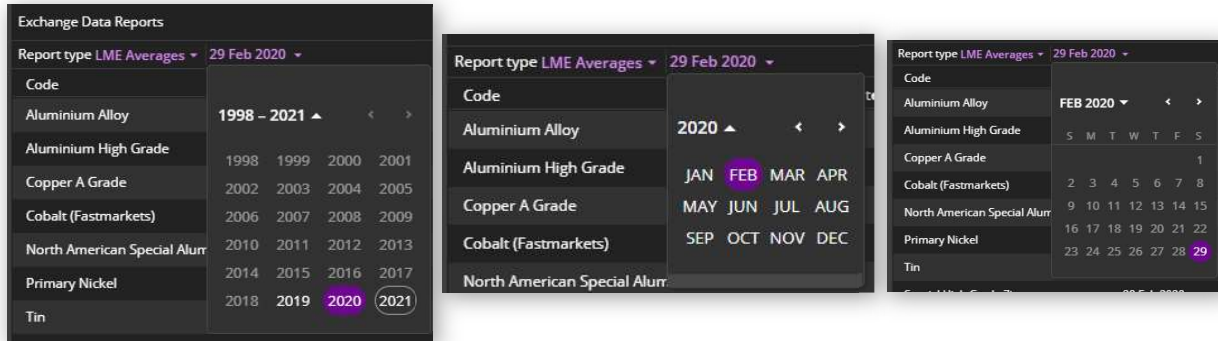
LME Averages Report

The LME Averages report displays the LME Monthly Average Settlement Price (MASP) which is based on LME Official Cash Settlement Prices available in the month. These averages are published daily, totaled, and averaged over the number of business days in the month, resetting at the end of each month. It is stated in US dollars per metric tonne. The MASP is the settlement price for Monthly Average Futures and LME Traded Average Price Options (TAPOs) contracts.



Code	Settlement Date	Cash Bid	Cash Mid	Cash Ask	3M Bid	3M Mid	3M Ask	15M Bid	15M Mid	15M Ask
Copper A Grade	30 Sept 2021	9,340.000	9,340.000	9,340.000	9,345.667	9,345.667	9,345.667	0.000	0.000	0.000
Aluminium High Grade	30 Sept 2021	2,686.000	2,686.000	2,686.000	2,691.167	2,691.167	2,691.167	0.000	0.000	0.000
Primary Nickel	30 Sept 2021	19,466.667	19,466.667	19,466.667	19,410.000	19,410.000	19,410.000	0.000	0.000	0.000
Special High Grade Zinc	30 Sept 2021	2,983.167	2,983.167	2,983.167	2,995.333	2,995.333	2,995.333	0.000	0.000	0.000
Lead	30 Sept 2021	2,391.500	2,391.500	2,391.500	2,284.667	2,284.667	2,284.667	0.000	0.000	0.000
Tin	30 Sept 2021	33,870.333	33,870.333	33,870.333	33,412.000	33,412.000	33,412.000	31,377.667	31,377.667	31,377.667
Aluminium Alloy	30 Sept 2021	2,290.000	2,290.000	2,290.000	2,290.000	2,290.000	2,290.000	0.000	0.000	0.000
North American Special Aluminium A...	30 Sept 2021	2,338.000	2,338.000	2,338.000	2,313.333	2,313.333	2,313.333	0.000	0.000	0.000
Cobalt (Fastmarkets)	30 Sept 2021	50,501.667	50,501.667	50,501.667	50,840.000	50,840.000	50,840.000	52,710.000	52,710.000	52,710.000

To view historic monthly average prices, click on the date drop down menu and select the year, and last day for the month you wish to view, this example shows selecting the February 2020 monthly averages:



You can copy and paste the LME monthly averages into Excel by clicking on the Export Options button in the widget. This will allow you to copy the values, or alternatively download an .xlsx or .csv file.

You can access LBMA and LME FX monthly averages in the Multi Price Table widget or the Historical Price Table widget, details are found in the Additional Data & Functionality section of this document.

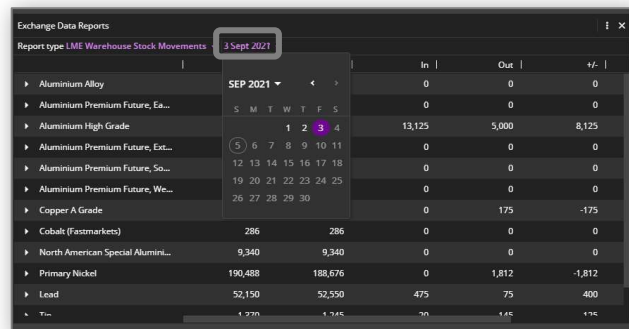
LME Warehouse Stocks Report

The LME Warehouse stocks report is published daily providing detailed warehouse and stock reports which include opening and closing stocks, stock movements, cancelled & live warrants across locations and metals.

By default, the report displays stock totals across all warehouses per metal. Each metal can then be expanded further to display details for each LME warehouse, then again by type of materials.

Code	Open	Close	In	Out	+/-	Warrants	Canc. Warrants
Aluminium Alloy	1,820	1,820	0	0	0	1,820	0
Aluminium Premium Future, Ea...	0	0	0	0	0	0	0
Aluminium High Grade	1,335,300	1,343,425	13,125	5,000	8,125	875,725	467,700
Aluminium Premium Future, Ext...	0	0	0	0	0	0	0
Aluminium Premium Future, So...	0	0	0	0	0	0	0
Aluminium Premium Future, We...	0	0	0	0	0	0	0
Copper A Grade	252,400	252,225	0	175	-175	152,475	99,750
Cobalt (Fastmarkets)	286	286	0	0	0	175	111
North American Special Alumi...	9,340	9,340	0	0	0	5,820	3,520
Primary Nickel	190,488	188,676	0	1,812	-1,812	121,998	66,678
Lead	52,150	52,550	475	75	400	41,725	10,825
Tin	1,370	1,245	20	145	-125	870	375

You can view historical data for each metal by choosing a different date on the date drop down.



Report type	LME Warehouse Stock Movements	In	Out	+/-
Aluminium Alloy	SEP 2021	0	0	0
Aluminium Premium Future, Ea...	S M T W T F S	0	0	0
Aluminium High Grade	1 2 3 4	13,125	5,000	8,125
Aluminium Premium Future, Ext...	5 6 7 8 9 10 11	0	0	0
Aluminium Premium Future, So...	12 13 14 15 16 17 18	0	0	0
Aluminium Premium Future, We...	19 20 21 22 23 24 25	0	0	0
Copper A Grade	26 27 28 29 30	0	175	-175
Cobalt (Fastmarkets)	286	286	0	0
North American Special Alumin...	9,340	9,340	0	0
Primary Nickel	190,488	188,676	0	1,812
Lead	52,150	52,550	475	400
Totals	1,270	1,745	20	145

You can also view all three different types of data report by duplicating the first Data reports widget. Click the Settings button (three dots icon in top right of the widget) and choose Duplicate Widget. A second widget appears on your worksheet, pre-populated with the same information. Click the Report type dropdown to change the warehouse location.

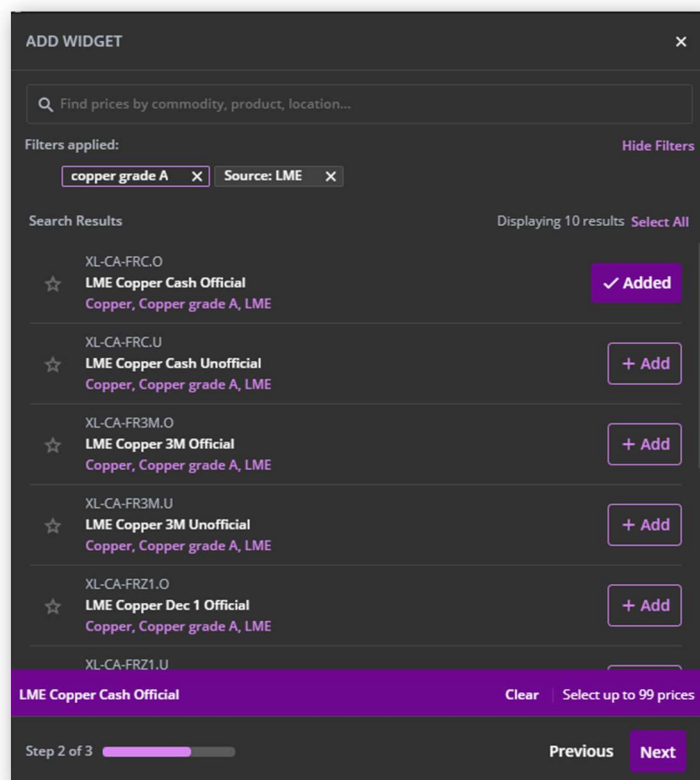


Exchange Data Reports								
Report type LME Warehouse Stock Movements ▾ 3 Sept 2021 ▾								
	Open	Close	In	Out	+/-	Warrants	Canc. Warrants	
▶ Aluminium Alloy	1,820	1,820	0	0	0	1,820	0	
▶ Aluminium Premium Future, Ea...	0	0	0	0	0	0	0	
▼ Aluminium High Grade	1,335,300	1,343,425	13,125	5,000	8,125	875,725	467,700	
▶ Amsterdam	0	0	-	-	-	0	0	
▶ Antwerp	0	0	-	-	-	0	0	
▶ Baltimore	27,250	27,250	-	-	-	18,875	8,375	
▶ Barcelona	0	0	-	-	-	0	0	
▶ Bilbao	875	875	-	-	-	0	875	
▶ Busan	3,300	3,300	-	-	-	3,275	25	
▶ Chicago	0	0	-	-	-	0	0	
▶ Detroit	11,875	11,875	-	-	-	9,125	2,750	
▶ Genoa	0	0	-	-	-	0	0	
▶ Gwangyang	81,150	80,775	-	375	-375	35,825	44,950	
▶ Hamburg	2,375	2,375	-	-	-	0	2,375	
▶ Helsingborg	0	0	-	-	-	0	0	
▶ Hull	0	0	-	-	-	0	0	
▶ Incheon	0	0	-	-	-	0	0	

EXCHANGE PRICES IN THE MULTI PRICE TABLE WIDGET

Exchange prices (London Metal Exchange, CME Group and Shanghai Futures Exchange) can be displayed alongside physical prices in existing widgets. This means you can create your own Single Price Tile, Price Chart, Multiple Price Table and Historic Price Table widgets that include physical prices and exchange prices.

These prices can be found in the Search. For example, we can search for the LME Copper Cash Official price with these Copper prices in the Multiple Price Table. Type LME and choose "Source: LME". Next, type Copper and choose "Product: Copper Grade A". Choose LME Copper Cash Official with the code XL-CA-FRC.O Click Next, then Confirm.



The screenshot shows the 'ADD WIDGET' search interface. At the top, there is a search bar with the placeholder text 'Find prices by commodity, product, location...'. Below the search bar, the filters applied are 'copper grade A' and 'Source: LME'. The search results are displayed as a list of items, each with a star icon, a code, a name, and a description. The first item is 'XL-CA-FRC.O LME Copper Cash Official' with a '✓ Added' button. Other items include 'LME Copper Cash Unofficial', 'LME Copper 3M Official', 'LME Copper 3M Unofficial', and 'LME Copper Dec 1 Official'. At the bottom, there is a 'Clear' button and a 'Select up to 99 prices' link. The progress bar shows 'Step 2 of 3' and 'Next' buttons.

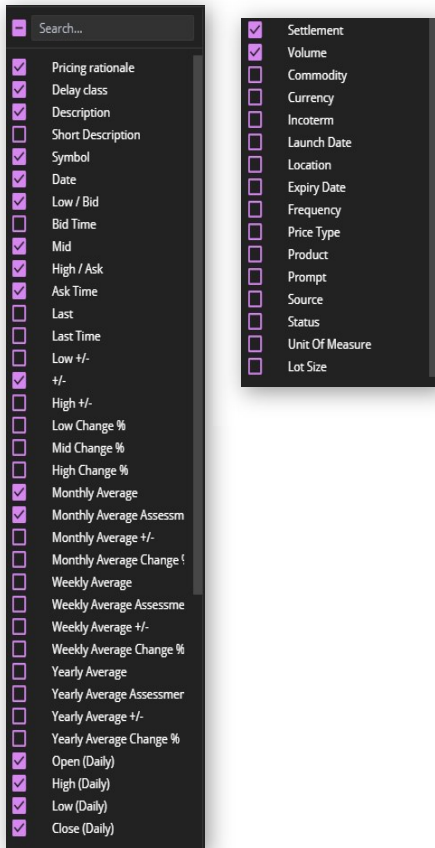
You can see that the fields for the mix of prices combine when an exchange price is added. For example, the fields for these copper prices change to Low/Bid and High/Ask when the copper exchange price is added, as shown below. Combining the fields in this way will align fields for physical and exchange prices, maximizing space in the widget and your workspace and removing any blank spaces.

Description	Symbol	Date	Low/Bid	Mid	High/Ask	+/-	Settings
Copper grade A cathode premium, cif Rotterdam, \$/tonne	MB-CU-0369	24 Nov...	40.00	45.00	50.00	0.00	
Copper grade A cathode premium, cif Shanghai, \$/tonne	MB-CU-0403	30 Nov...	40.00	50.00	60.00	2.50	
Copper grade A cathode premium, in-whs Shanghai, \$/ton...	MB-CU-0405	30 Nov...	45.00	56.00	67.00	2.50	
LME Copper Cash Official	XL-CA-FRC.O	30 Nov...	7,674.50	7,674.50	7,674.50	-	

Viewing Streaming Delayed or Live exchange prices in the Multi Price Table

Depending on your access you may be entitled to view previous day, delayed or live exchange prices in the Multi Price Table widget. When a price changes in real time, it flashes either green (up tick) or red (down tick) from the previous price update.

Description	Bid Time	Bid	Ask	Ask Time	Last	Last Time	Open (D...)	High (D...)	Low (Daily)	Volume
COMEX Gold 1M (Sep 21)	10:50	1,823.20	1,824.00	10:50	1,823.30	09:35	1,825.70	1,825.70	1,823.30	3
COMEX Gold 2M (Oct 21)	10:50	1,823.80	1,825.20	10:50	1,823.20	10:33	-	-	1,823.20	433
COMEX Gold 3M (Nov 21)	10:49	1,824.90	1,825.20	10:50	1,834.20	03 Sept	-	-	-	7
COMEX Gold 4M (Dec 21)	10:50	1,826.10	1,826.20	10:50	1,826.20	10:50	-	-	1,824.90	30046
COMEX Gold 5M (Feb 22)	10:50	1,828.10	1,828.30	10:50	1,827.80	10:46	1,830.30	1,831.10	1,827.80	1117
COMEX Gold 6M (Apr 22)	10:50	1,829.80	1,830.00	10:50	1,829.60	10:46	1,832.80	1,833.80	1,828.80	30
COMEX Gold 7M (Jun 22)	10:50	1,831.20	1,831.50	10:50	1,831.10	10:21	1,833.70	1,834.20	1,831.10	13
COMEX Gold 8M (Aug 22)	10:50	1,832.40	1,832.70	10:50	1,824.10	03 Sept	-	-	-	2
COMEX Gold 9M (Oct 22)	10:50	1,833.20	1,834.30	10:50	1,830.00	03 Sept	-	-	-	1
COMEX Gold 10M (Dec 22)	10:50	1,835.20	1,835.60	10:50	1,838.50	00:08	1,838.50	1,838.50	1,838.50	1



There are additional fields available for the streaming exchange prices, which are available to select in Settings such as Bid Time, Ask Time, Expiry Date, Prompt, Volume, Settlement and Open (Daily), High (Daily), Low (Daily) and Close (Daily).

EXCHANGE PRICES IN THE HISTORIC DATA TABLE WIDGET

LME Copper 3m Official Price and Copper Premia

1Y | 1 Apr 2019 - 1 Apr 2020 | Actual | Settings

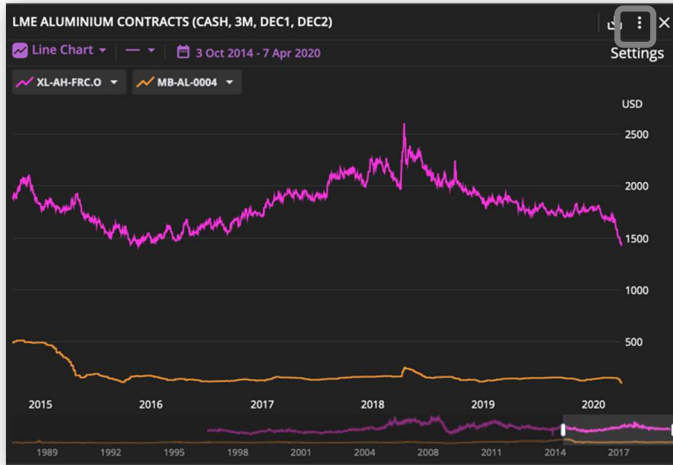
	XL-CA-FRC.O	MB-CU-0369	MB-CU-0403	MB-CU-0405
Date	Mid	Mid	Mid	Mid
01 Apr 2020	4797	42.5	60.5	63.5
31 Mar 2020	4797	42.5	60.5	61.5
30 Mar 2020	4763	42.5	59.5	61.5
27 Mar 2020	4774	42.5	58.5	61.5
26 Mar 2020	4775.5	42.5	57.5	61.5
25 Mar 2020	4754	42.5	57.5	61.5
24 Mar 2020	4789.5	42.5	57.5	61.5
23 Mar 2020	4617.5	42.5	57.5	61.5
20 Mar 2020	4854.5	42.5	57.5	61.5
19 Mar 2020	4684.5	42.5	57.5	61.5
18 Mar 2020	4860	42.5	57.5	61.5

Physical and exchange prices can be aligned in the same Historic Data Table widget. The exchange prices and physical prices align side by side. For physical prices which do not price daily the table "carries forward" prices in grey between assessment date to align with daily exchange prices.

For Exchange data, go to the Settings drop down and pick "Null" which will show all

weekdays including holidays even if there is no updated price, or select “Value” which will returned only dates with published prices. This is important if you will be exporting the data into Excel to calculate an average.

EXCHANGE PRICES IN THE PRICE CHART WIDGET



You can add exchange prices which only update once daily such as the LME Officials or Unofficials to the Price Chart widget in the same way as other widgets.

Click the “Widget action” button, then “Edit Widget”. Use the Search to find LME Aluminium official prices by choosing Source first.

Type “LME” and select the filter “Source:LME”.



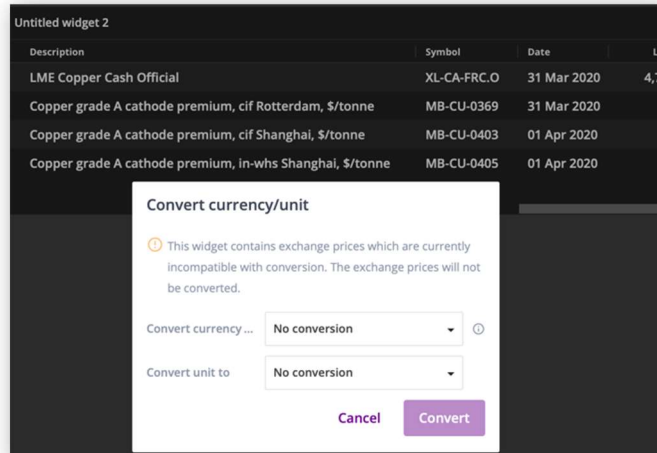
Then for the Commodity, type “Aluminium” and select the filter “Commodity: Aluminium”.

The example above shows how you can add the LME Aluminium Cash Official price to instruments already displaying on the chart. To view multiple Y axis, click on the Settings button and click Multiple Axis.

You can also view the daily Settlement prices of CME or SHFE futures in the Price Chart widget

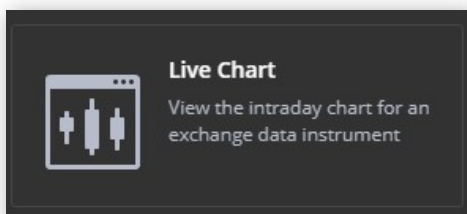
To chart exchange prices which have an Open, High, Low and Close price (and will provide intraday and historical prices depending on your level of access) please use and refer to the Live Chart widget section below.

Please note, it is not yet possible to export to Excel with formulae for exchange prices. Similarly, exchange prices cannot be converted to different currencies/units of measure. If you try to change the currency/unit in this Multi Price Table, for example you will encounter this warning message.



Multi Price Copper Exchange Price and Cash							GBP / Dry Metric Ton Unit	⌵	⋮	✕
Description	Symbol	Date	Low/Bid	Mid	↓	H	Settings			
ⓘ LME Copper Cash Official	XL-CA-FRC.O	31 Mar 2020	4,797.00	4,797.00	4,7					
Copper grade A cathode premium, in-whs Shanghai, \$/tonne	MB-CU-0405	01 Apr 2020	45.875196	51.106...	56.					
Copper grade A cathode premium, cif Shanghai, \$/tonne	MB-CU-0403	01 Apr 2020	42.655884	48.692...	54.7					
Copper grade A cathode premium, cif Rotterdam, \$/tonne	MB-CU-0369	31 Mar 2020	32.26844	34.285...	36.3					

EXCHANGE PRICES IN THE LIVE CHART WIDGET



Visualizing trends and intra-day price movements is critical to monitoring and analyzing your markets. The Live Chart widget enables you to view historical and intra-day data for a single exchange price with open/high/low/close prices.

Chart either a line, bar, candle or mountain chart for one price, displaying the data in intervals from 5 minutes up to 1 month with volume data (where available) in the sub-chart at the bottom.

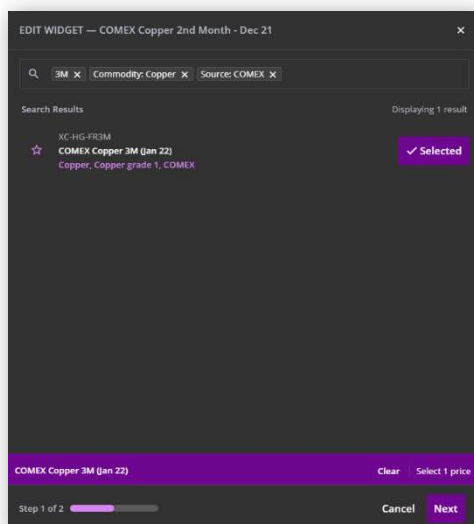
The Y axis label shows you the current market level in real time.



You can also chart other data; live FX spot rates, precious spot prices and ECB rates. Note that the Live Chart Widget does not contain CME or SHFE daily settlement values, you should use the Price Chart widget for settlement data.

Searching and adding a symbol to the Live Chart

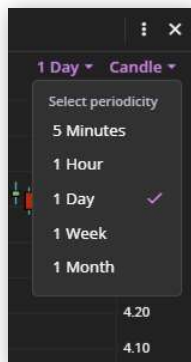
To add a Live Chart widget click Add widget > Live Chart and search for the price you wish to plot in the chart. To search for the COMEX Copper 3 Months symbol, type COMEX and choose Source: COMEX. This will start to filter the symbols for this exchange. Type Copper and choose Commodity: Copper. Finally using a keyword search



type 3M for the 3 months prompt date and find the code for COMEX Copper 3 months.

You can only add one symbol at a time into the Live Chart widget.

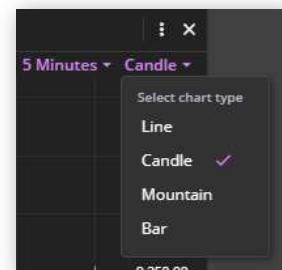
Edit the periodicity displayed in the chart



To change the periodicity of the chart, click the drop-down menu in the top right of the widget. Each candle represents 5 minutes of data. In this case we can click on the 5 minutes dropdown and change to any of these other periods.

Amend the type of chart displayed

To change the type of chart which is displayed, click the chart type menu at top right. The options are bar, candle, line and mountain.



Candle chart – here each candle represents the open, high, low and close of the period. The high is represented by the vertical line, which extends above the top of the body to show the highest price. The low is represented by the lowest point on the vertical line.

The body of the candle represents the open and close. If the body is filled in green, then the price has risen that day so the open would be the lowest line of the box and the close would be top line. Red represents the price having a net decline so the top line is the open and the bottom line would be the close.



Bar chart -this is a similar display to candle charts but does not have a body filled in. The bar represents the period selected and the vertical line represents the high and low of that price. The left-hand horizontal line represents to opening price and the right hand represents the closing price.



Line chart - represents the price history for the period selected.



Mountain chart - displays the same as a line chart but shaded to the bottom of the X axis for visual effect.



View price data for each interval

When hovering over a price, the chart shows a display box with details of the price at that interval.



Resizing the chart

Change the size of the chart by moving the mouse scroller up to see more data, and down to zoom in on less data.

Click and drag the mouse to move forwards and backwards in time.

EXCHANGE ADDITIONAL DATA & FUNCTIONALITY

Data sets

Beyond the LME, CME and SHFE datasets, Fastmarkets Dashboard also contains additional data from third parties on the following:

- Spot FX and forward rates
- Spot precious prices
- Daily ECB rates
- LBMA prices

LBMA historical data	
1M	4 Sept 2022 - 4 Oct 2022 Actual
Date	XO-PTLBMA-T.AM Bid
4 Oct 2022	910.00
3 Oct 2022	865.00
30 Sept 2022	877.00
29 Sept 2022	855.00
28 Sept 2022	840.00
27 Sept 2022	861.00

The data can be added to all existing widgets in the same way as described above. To the left is an example of LBMA Platinum AM price in the Historical Price Table widget.

Averages

To access LBMA and LME FX Monthly Averages in the Dashboard, you can add the relevant fields in the Multi Price Table, Historic Price Table and Price Chart widgets.

When accessing the monthly averages in the Multi Price Table, you can add the following fields from the column picker:

- **Monthly Average** – the previous month’s monthly average
- **Monthly Average Assessment Date** – the period for the average
- **MTD Average** – the current Month To Date (MTD) Average, showing the Month To Date (MTD) period, eg 1-27th September 2022
- **MTD Average Assessment Date** – the Month To Date (MTD) period eg September 2022

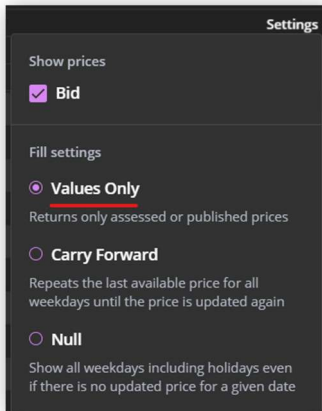
You can hover over the date field and the information tool tip shows the field being averaged (bid).

LBMA Averages							
Description	Symbol	Date	Low / Bid	Monthly Average	Monthly Ave...	MTD Average	MTD Average As...
LBMA Gold Price AM USD	XO-AULBMA-T.AM	20 Sept 2...	1,667.90	1,775.97	Aug 2022	1,681.25	1 Sep - 20 Sep
LBMA Gold Price PM USD	XO-AULBMA-T.PM	16 Sept 2...	1,664.65	1,776.30	Aug 2022	1,685.88	1 Sep - 16 Sep
LBMA Palladium Price PM EUR	XO-PDLBMAEUR-T.PM	16 Sept 2...	2,098.44	2,118.12	Aug 2022	2,133.15	1 Sep - 16 Sep
LBMA Palladium Price AM EUR	XO-PDLBMAEUR-T.AM	20 Sept 2...	2,167.83	2,107.17	Aug 2022	2,129.38	1 Sep - 20 Sep
LBMA Palladium Price AM USD	XO-PDLBMA-T.AM	20 Sept 2...	2,170.00	2,154.11	Aug 2022	2,126.50	1 Sep - 20 Sep
LBMA Palladium Price PM USD	XO-PDLBMA-T.PM	16 Sept 2...	2,089.00	2,165.11	Aug 2022	2,130.00	1 Sep - 16 Sep
LBMA Palladium Price PM GBP	XO-PDLBMAGBP-T.PM	16 Sept 2...	1,835.68	1,782.33	Aug 2022	1,855.36	1 Sep - 16 Sep
LBMA Palladium Price AM GBP	XO-PDLBMAGBP-T.AM	20 Sept 2...	1,897.68	1,774.06	Aug 2022	1,855.22	1 Sep - 20 Sep
LBMA Silver Price USD	XO-AGLBMA-T	20 Sept 2...	19.315	20.155	Aug 2022	19.296	1 Sep - 20 Sep
LBMA Silver Price EUR	XO-AGLBMAEUR-T	20 Sept 2...	19.31	19.746	Aug 2022	19.308	1 Sep - 20 Sep
LBMA Silver Price GBP	XO-AGLBMAGBP-T	20 Sept 2...	16.89	16.572	Aug 2022	16.815	1 Sep - 20 Sep

LME FX Averages								
Description	Symbol	Date	Bid	Ask	Monthly Average	Monthly Averag...	MTD Average	MTD Average Assessment Period
LME British Pound Official	XL-GBPUSD-T.O	19 Sep...	1.1373	1.1373	1.2156	Aug 2022	1.1453	1 Sep - 19 Sep
LME Japan Yen Official	XL-USDJPY-T.O	19 Sep...	143.63	143.63	133.12	Aug 2022	143.40	1 Sep - 19 Sep
LME Euro Official	XL-EURUSD-T.O	19 Sep...	0.9983	0.9983	1.0227	Aug 2022	0.9983	1 Sep - 19 Sep

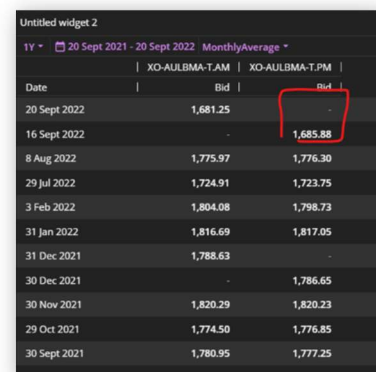
Should you want to combine both exchange data with our physical price assessments, this is possible in all of the mentioned widgets. Note that the Month to date (MTD) average field in Multi Price Table will not display an average for physical PRA data currently.

You can also access historical monthly averages in the Historical Price Table widget. Please note, the default field used will be the same as the MPT.

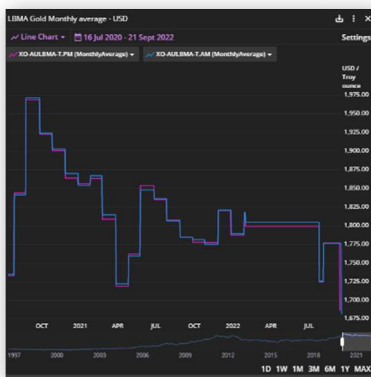


Settings - It is recommended that for monthly averages for exchange data, when using the Historic Price Table widget, you should use the forward fill setting “Values Only”. Please do not use the other settings or the averages will not display correctly.

MTD Averages in Historic Price Table - Due to differences in publication times for LBMA and LME prices and FX rates, there may be gaps in the current Month to Date field until prices are published for that day. In the below example LBMA Gold PM hasn't yet received a price today so it appears as MTD Average until the 16th Sep. For the LBMA Gold AM price, as the price is already published, the MTD average date is showing as the 20th Sep.



Date	Bid	Bid
20 Sept 2022	1,681.25	
16 Sept 2022		1,685.88
8 Aug 2022	1,775.97	1,776.30
29 Jul 2022	1,724.91	1,723.75
3 Feb 2022	1,804.08	1,798.73
31 Jan 2022	1,816.69	1,817.05
31 Dec 2021	1,788.63	
30 Dec 2021		1,786.65
30 Nov 2021	1,820.29	1,820.23
29 Oct 2021	1,774.50	1,776.85
30 Sept 2021	1,780.95	1,777.25



You can access the monthly average in a Price Chart back to 1997.

The monthly average for LBMA and LME FX can be easily copied and pasted from any of the mentioned widgets into Excel as a static data export or downloaded to Excel or as a PDF.

Market pages

Fastmarkets platform contains predefined market pages containing delayed Exchange data from several venues as well as live OTC Foreign Exchange & Precious Spot prices.

What are market pages?

Market pages bring together data into a single view. They are a great place to start exploring Fastmarkets data and analysis, and can be used as the basis to create your own customised workspaces, or sign up for a newsletter

The new market pages consist of:

- **OTC - FX** - contains free live FX “Majors” indicative spot prices as well as the FX forwards
- **OTC – Precious** - free live precious metals indicative spot prices as well as previous day LBMA prices

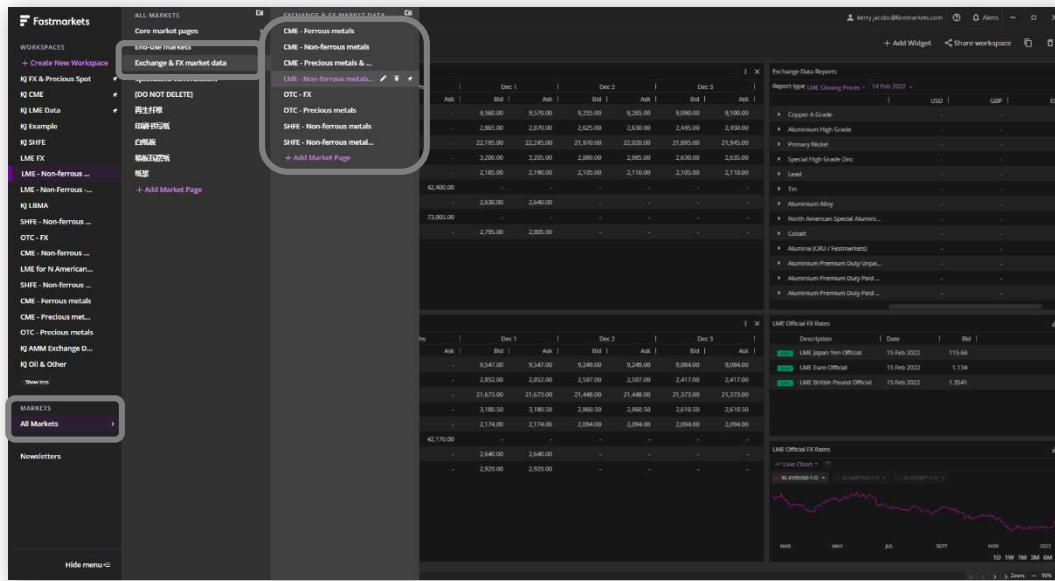
- **LME – Non-Ferrous – Previous Day** – contains previous day key LME prices: settlements, Officials, Unofficials and Official Monthly Averages. It also includes Warehouse Stocks and LME Official FX rates (note if you have live permissions, you will see the data you are permitted for)

- **CME – Non-Ferrous** - contains futures for the CME quotations and trade prices
- **CME Precious & PGMs**
- **CME – Ferrous Metals**

- **SHFE – Non-Ferrous** – contains futures for the SHFE quotations and trade prices
- **SHFE – Non-Ferrous – Closes** - A display similar to above but it only shows the historical data for the Shanghai closes. It’s suitable for North American audiences when the SHFE is closed.

Please note there is no need to subscribe to any fee liable 3rd party Exchanges to access these displays as the data will be delayed.

To access these prebuilt pages, take a look at the left menu of the Dashboard and click All Markets . You can then navigate to All Markets > Exchange & FX Market Data and click on the Market page you would like to open.



FURTHER HELP

If after reading these instructions you have further questions about how to use the Fastmarkets Dashboard, please contact our Customer Success teams or for access/order queries our Client Services team:

- **Europe, Middle East and Africa: +44 20 3855 5581**
- **Asia: +65 31 633 458**
- **Americas: +1 708 329 2641**
- **Customer Success Email: customersuccess@fastmarkets.com**
- **Client Services Email: client.services@fastmarkets.com**